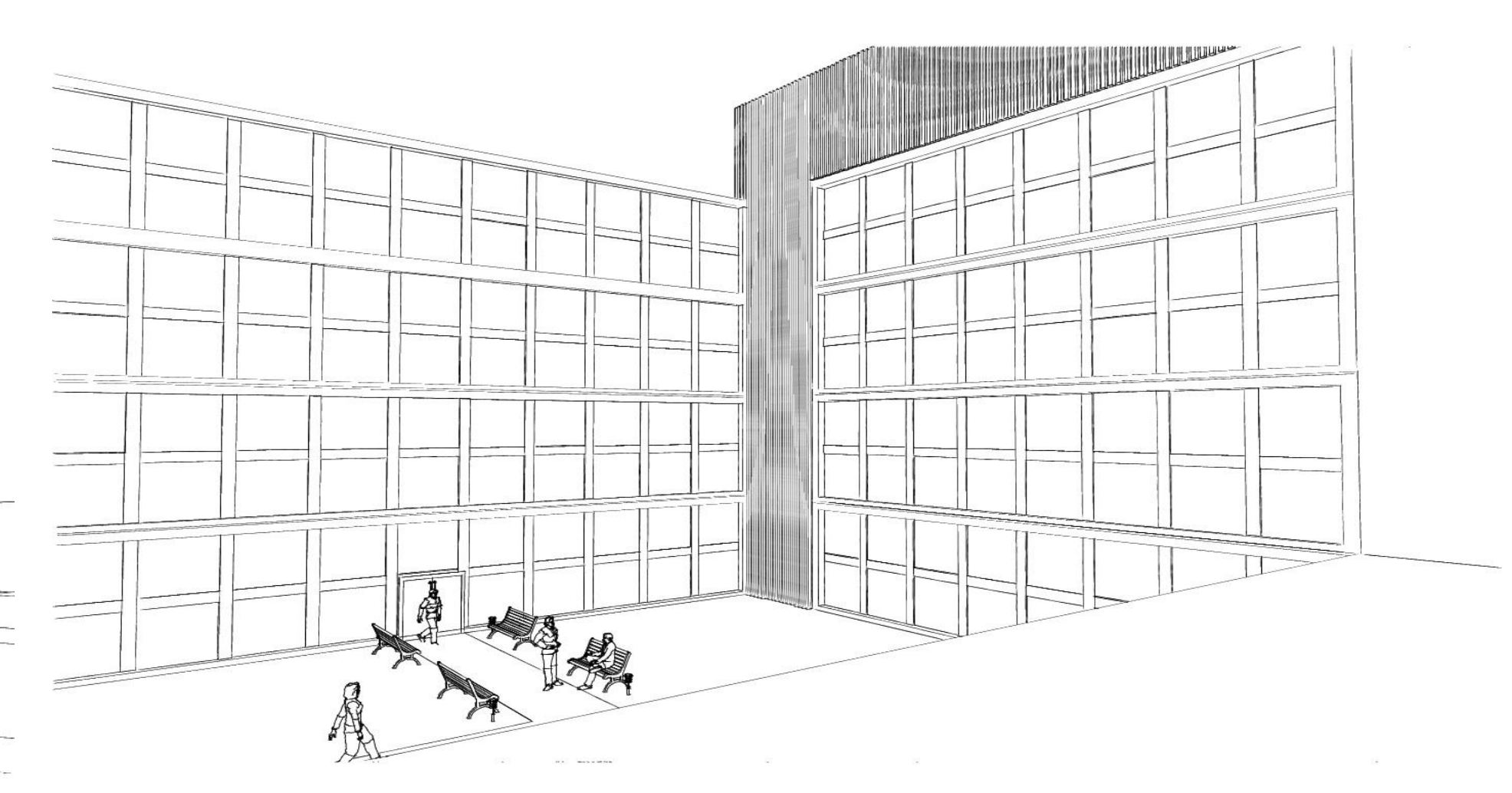
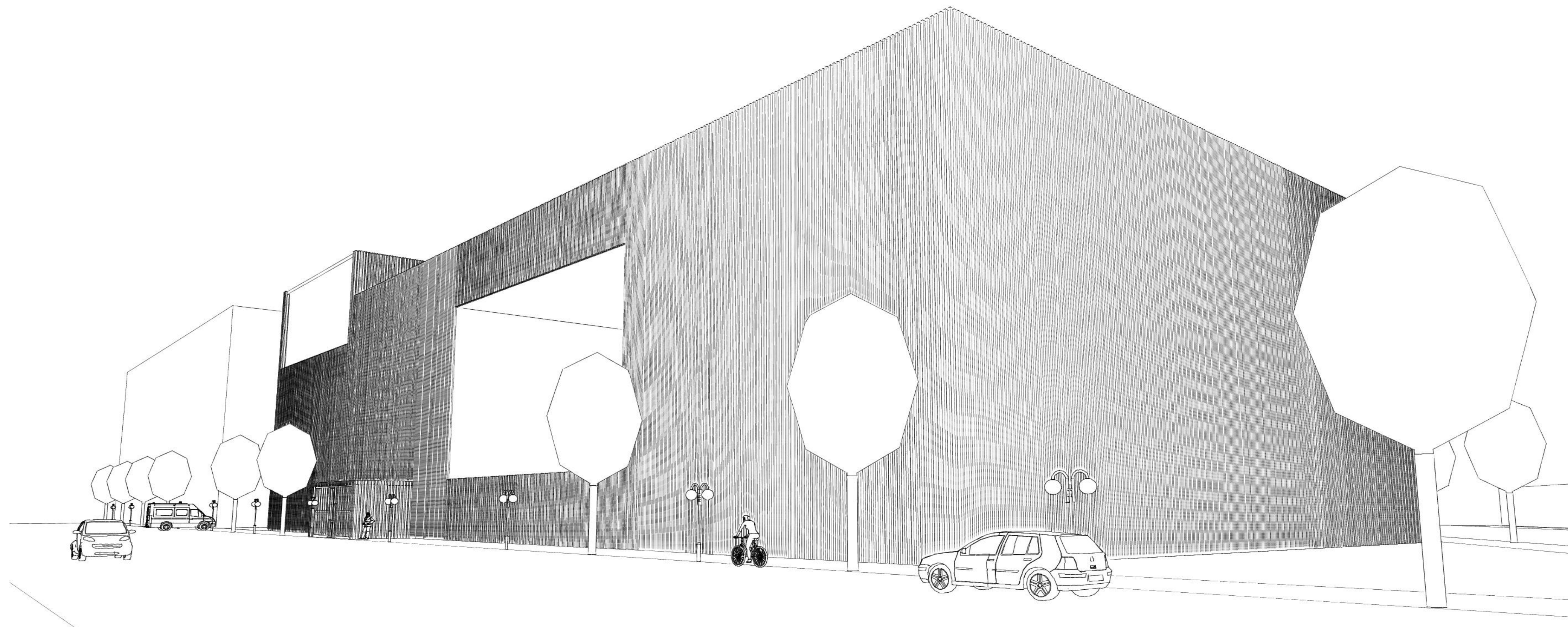
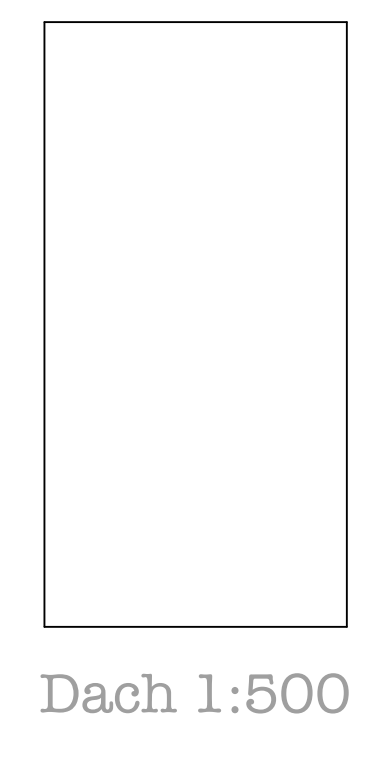


Filmhaus Berlin

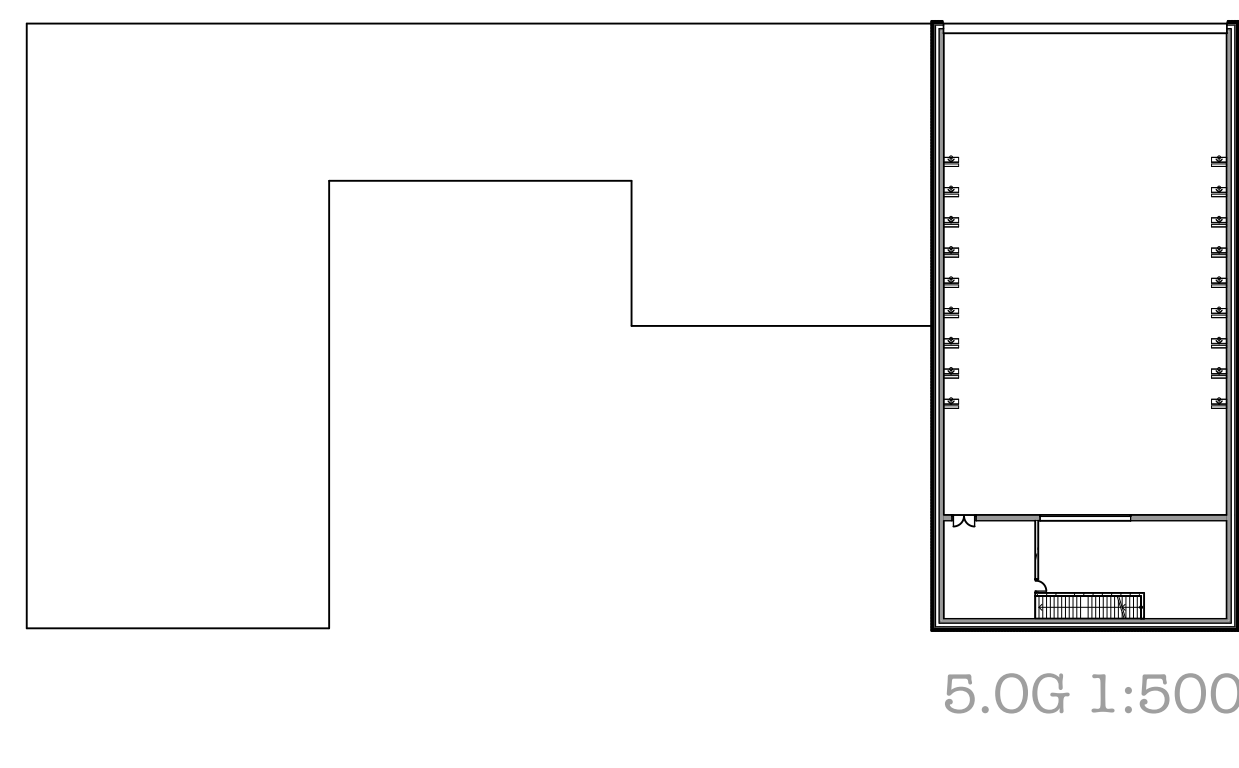
Entwerfen BA II S 17 Prof. Knoche, Prof. Schüler
Richter Christian



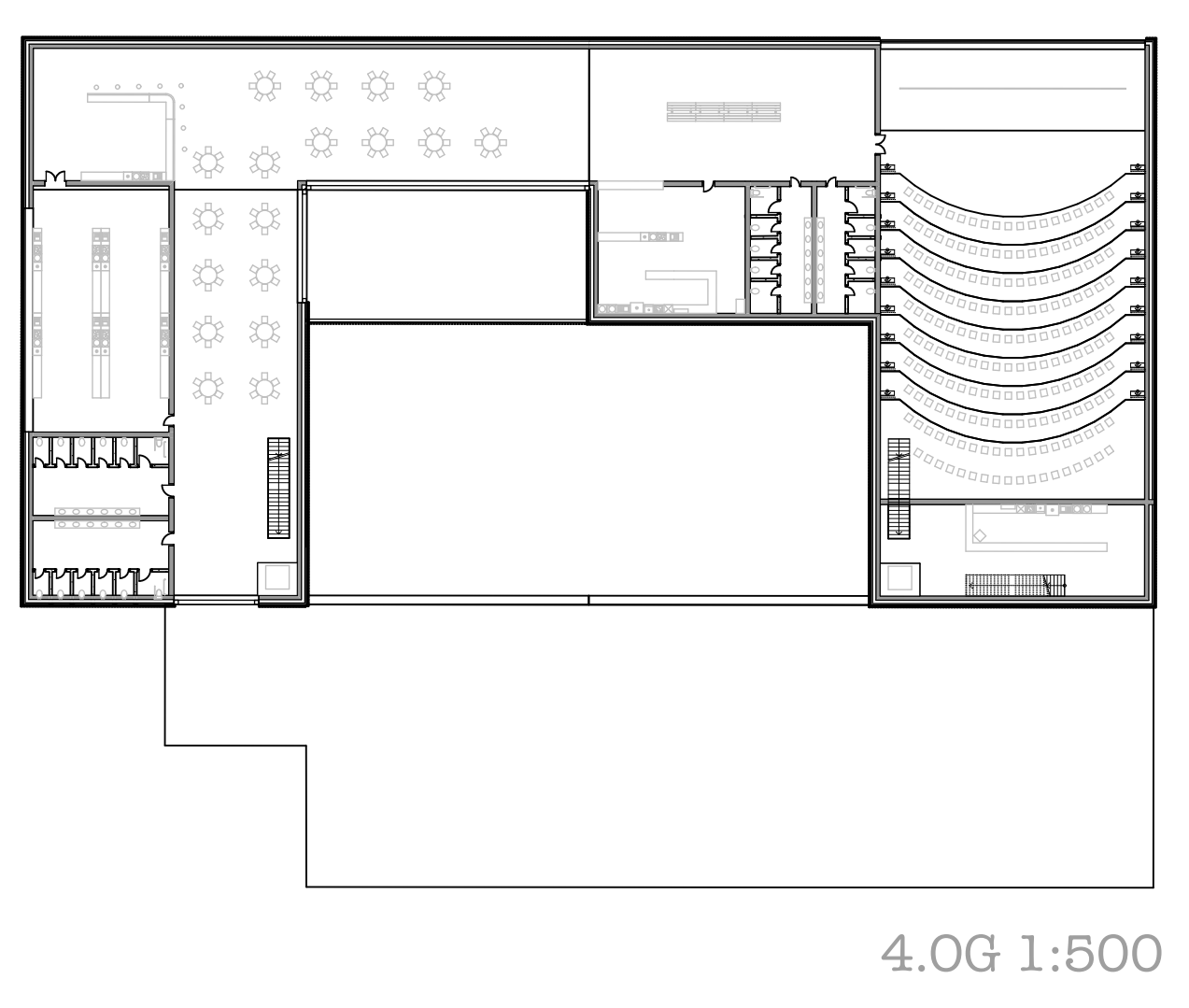
Hofansicht



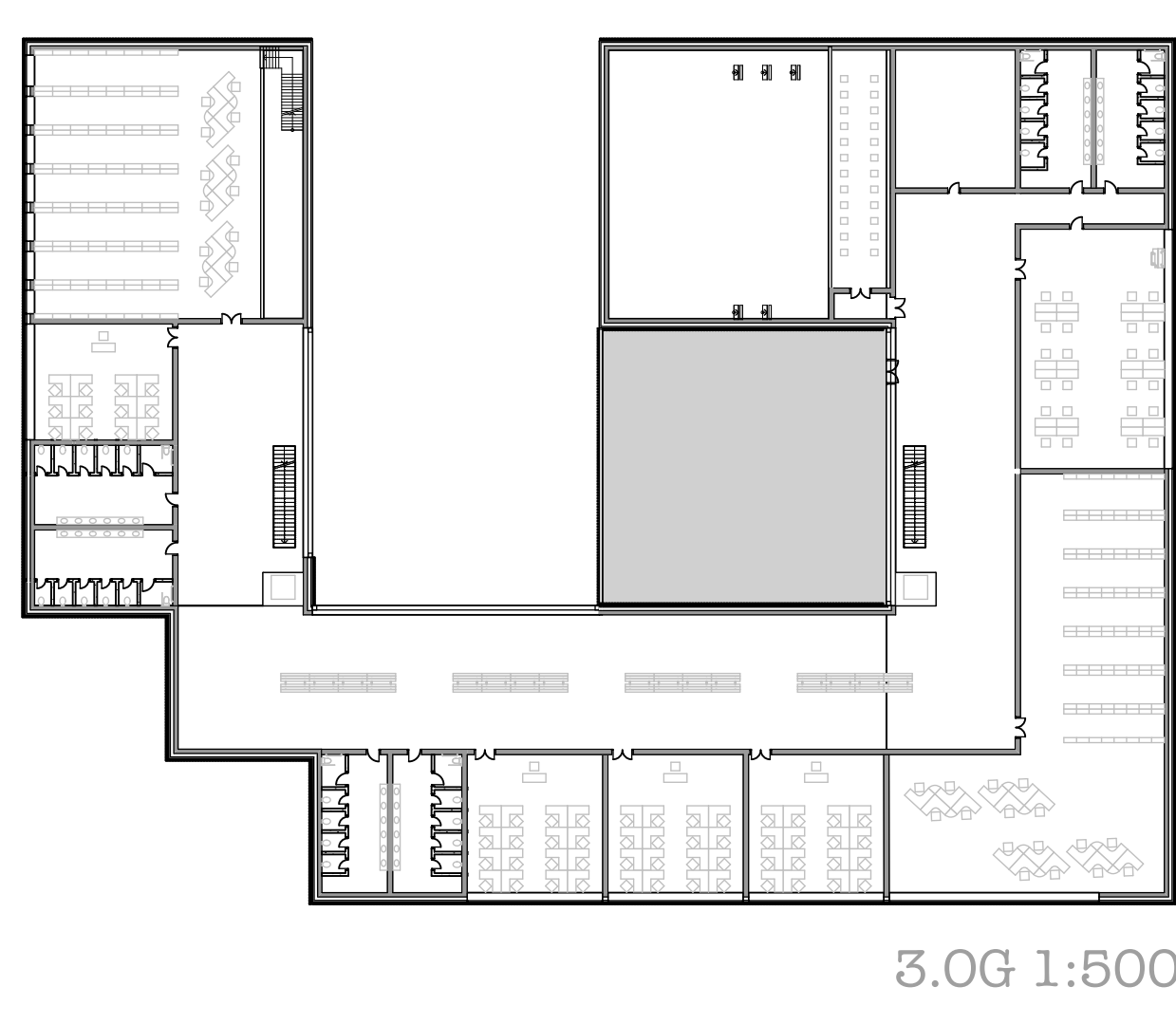
Dach 1:500



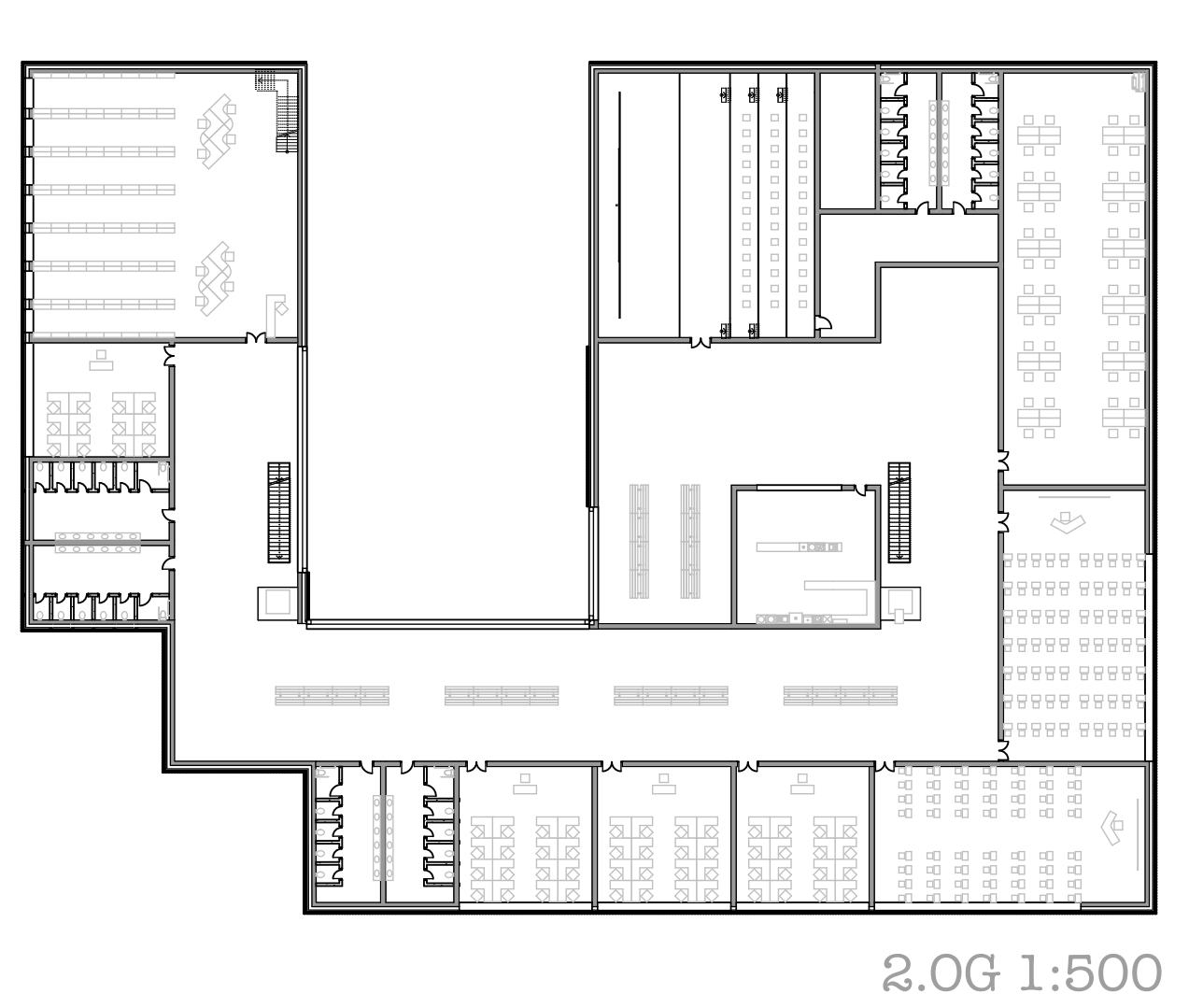
5.OG 1:500



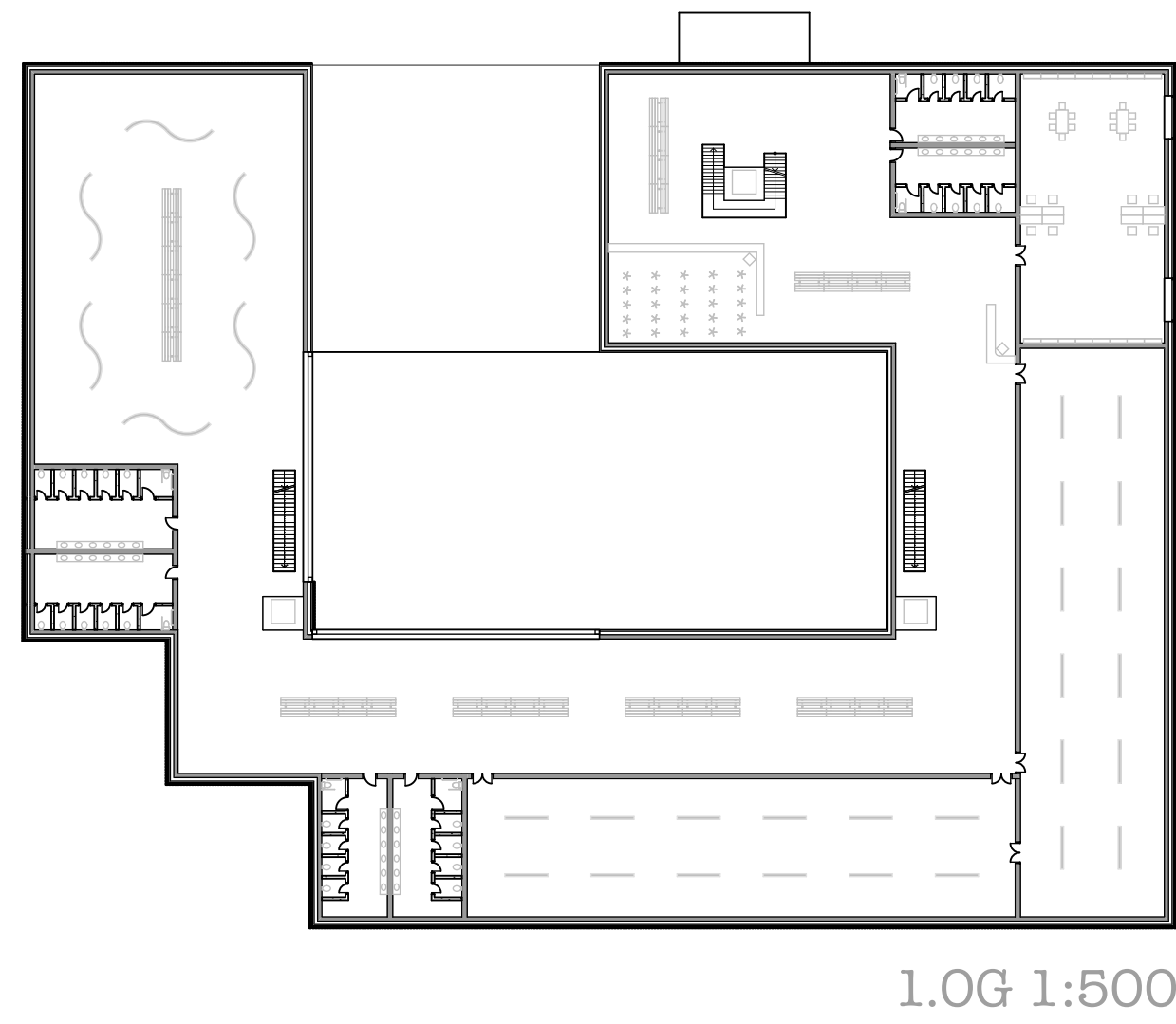
4.OG 1:500



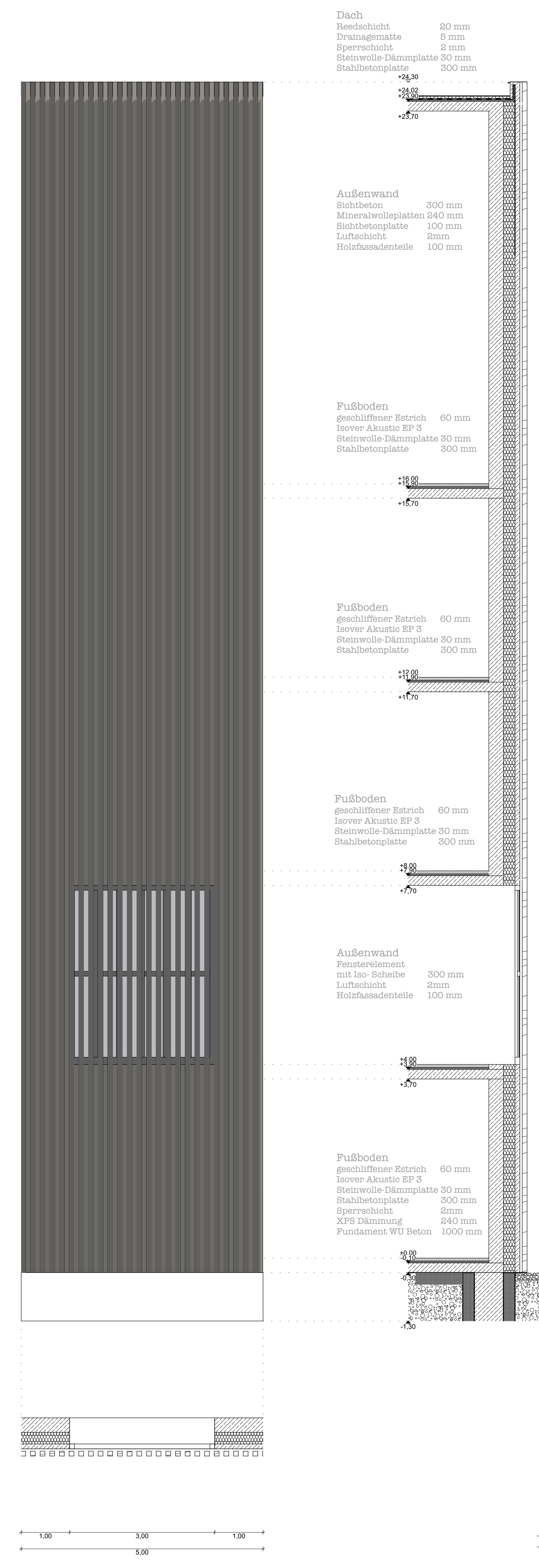
3.OG 1:500



2.OG 1:500



1.OG 1:500



Dach
 Reedschicht 20 mm
 Drainagematte 5 mm
 Sperrschicht 2 mm
 Steinwolle-Dämmplatte 30 mm
 Stahlbetondecke 300 mm

Außenwand
 Sichtbeton 300 mm
 Mineralwolleplatten 240 mm
 Sichtbetondecke 100 mm
 Lufschicht 2mm
 Holzfassendteile 100 mm

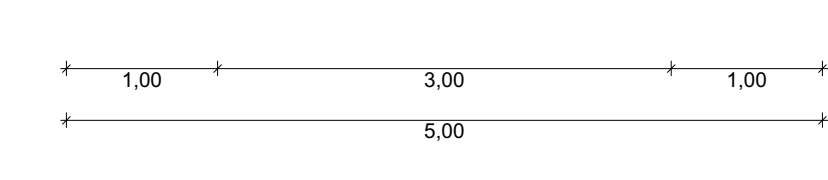
Fußboden
 geschliffener Estrich 60 mm
 Isover Akustic EP 3
 Steinwolle-Dämmplatte 30 mm
 Stahlbetondecke 300 mm

Fußboden
 geschliffener Estrich 60 mm
 Isover Akustic EP 3
 Steinwolle-Dämmplatte 30 mm
 Stahlbetondecke 300 mm

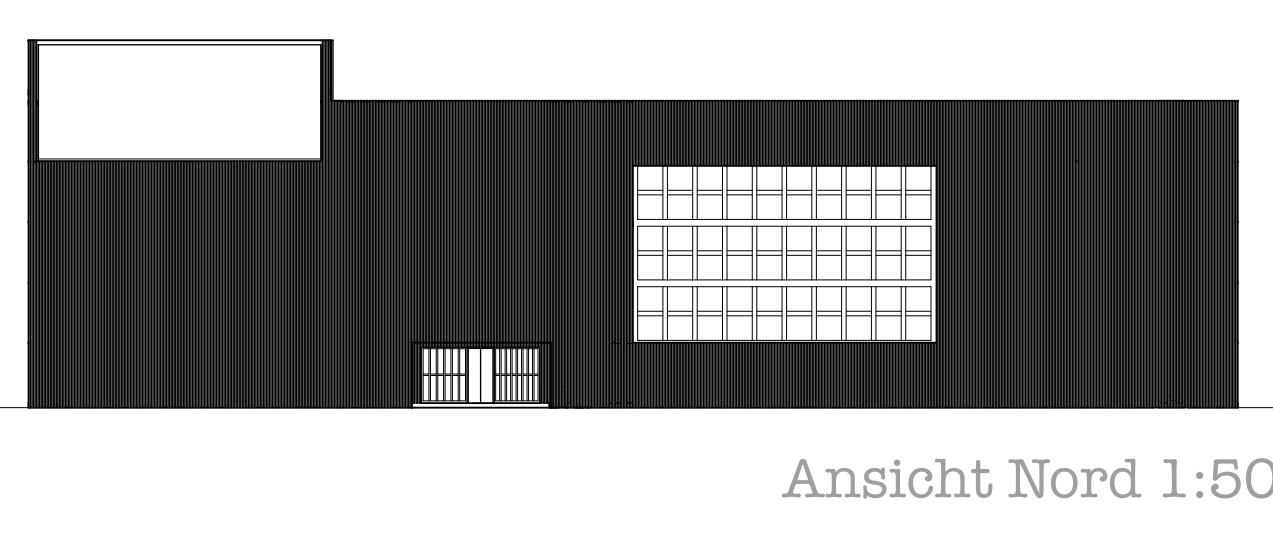
Fußboden
 geschliffener Estrich 60 mm
 Isover Akustic EP 3
 Steinwolle-Dämmplatte 30 mm
 Stahlbetondecke 300 mm

Außenwand
 Fensterelement mit Iso-Scheibe 300 mm
 Lufschicht 2mm
 Holzfassendteile 100 mm

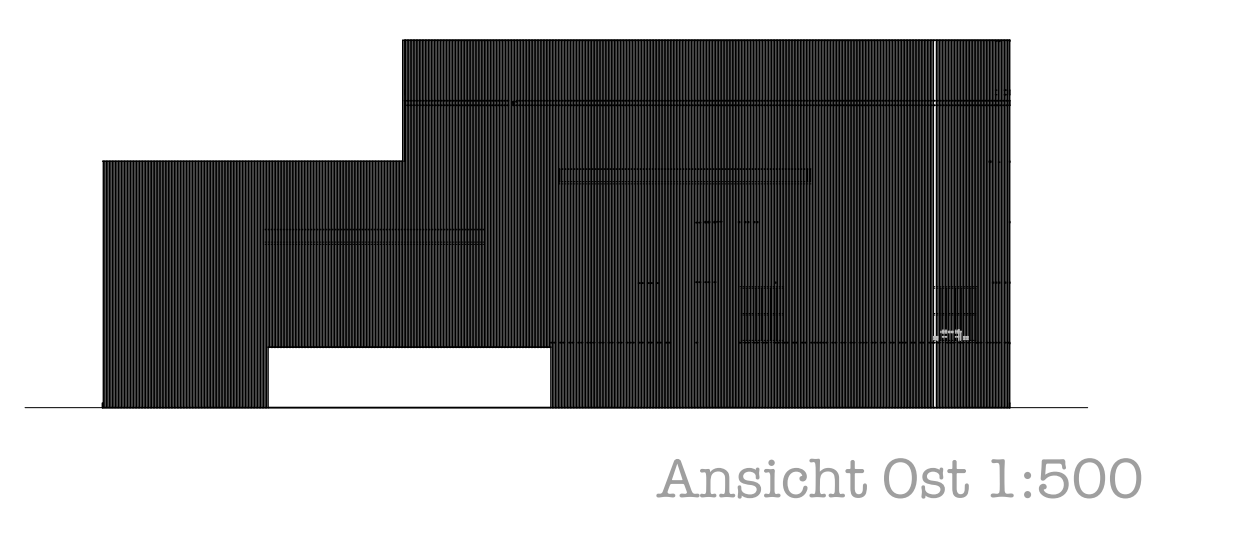
Fußboden
 geschliffener Estrich 60 mm
 Isover Akustic EP 3
 Steinwolle-Dämmplatte 30 mm
 Stahlbetondecke 300 mm
 Sperrschicht 2mm
 XPS Dämmung 240 mm
 Fundament VII Beton 1000 mm



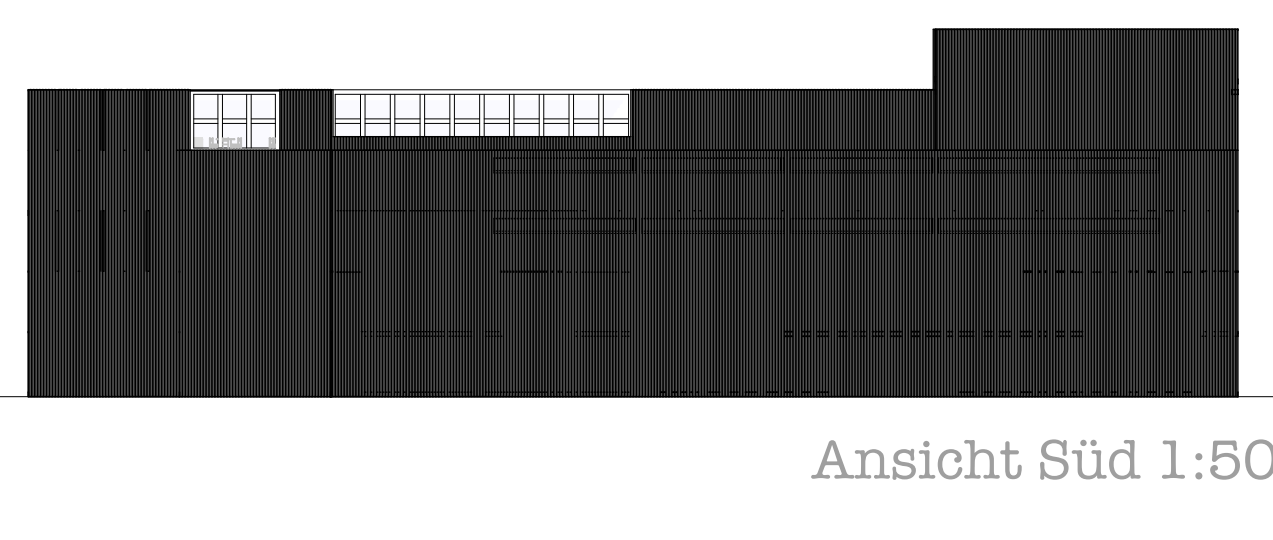
Fassadenschnitt 1:50



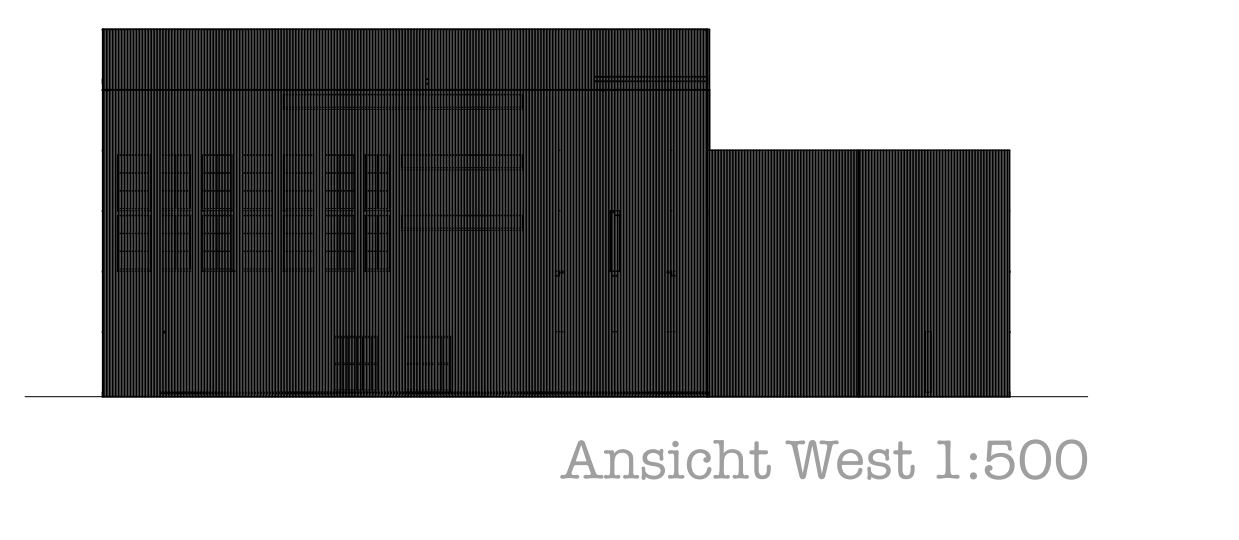
Ansicht Nord 1:500



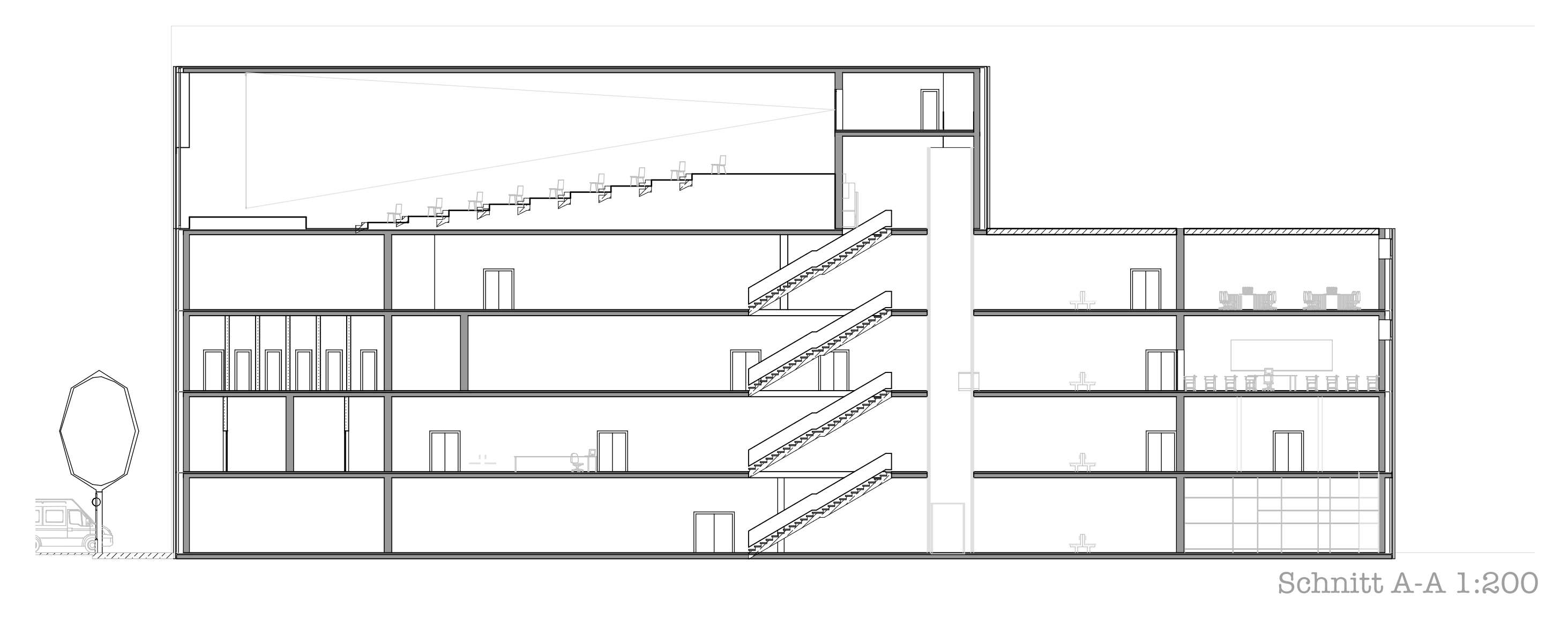
Ansicht Ost 1:500



Ansicht Süd 1:500



Ansicht West 1:500



Schnitt A-A 1:200