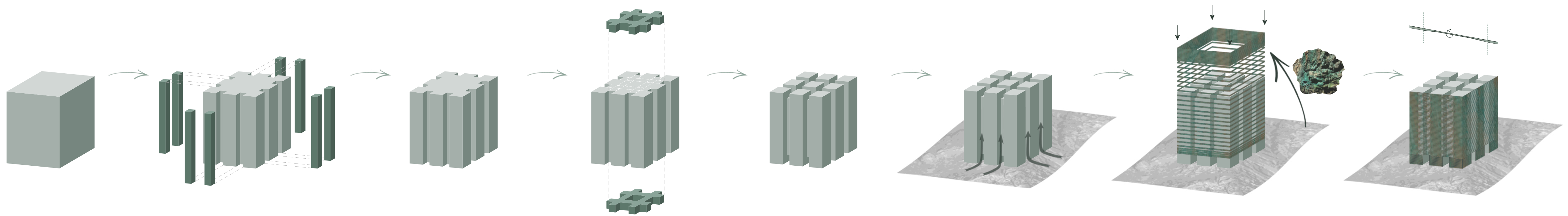
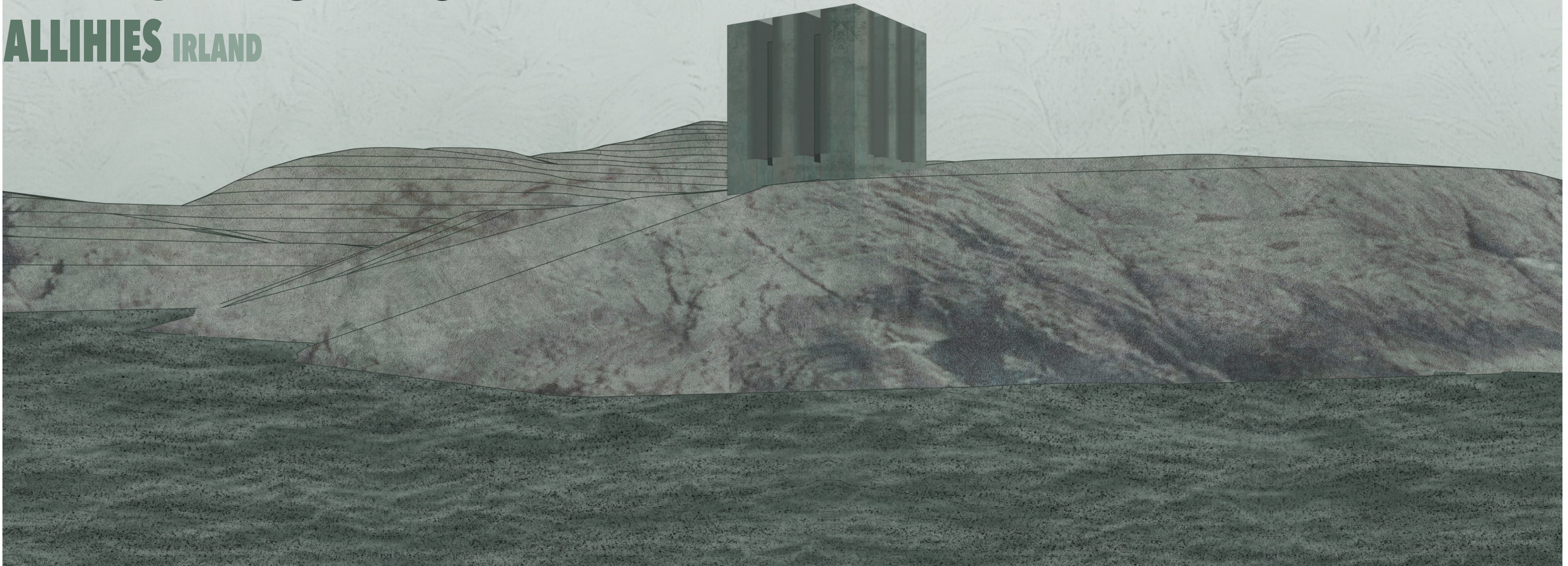


# ZWISCHEN MEER UND MINE BERGBAUARCHIV

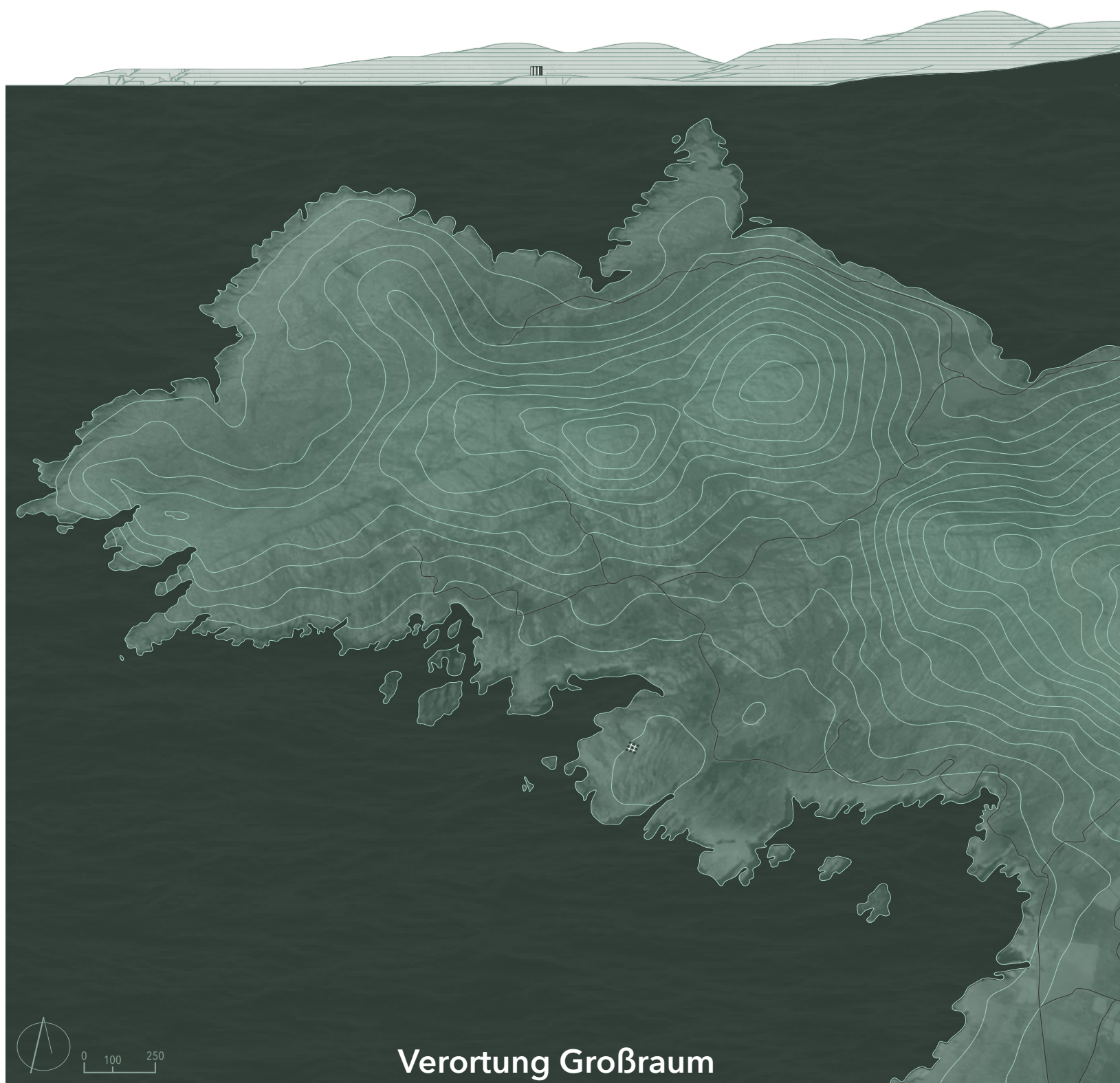
ALLIHIES IRLAND

LAURA MARIE STRUNZ  
KONZEPTIONELLER ENTWURF



Konzept Holzmodell

Konzept Landschaft



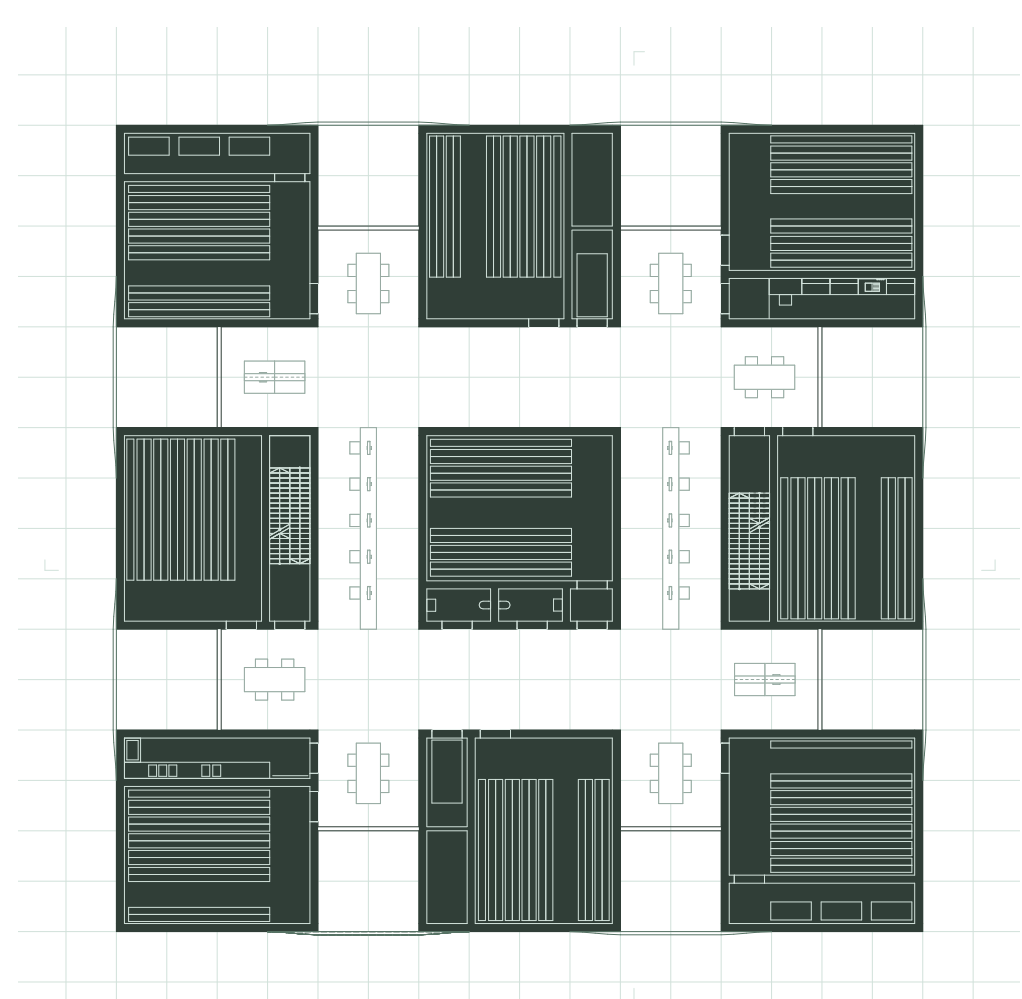
Verortung Großraum



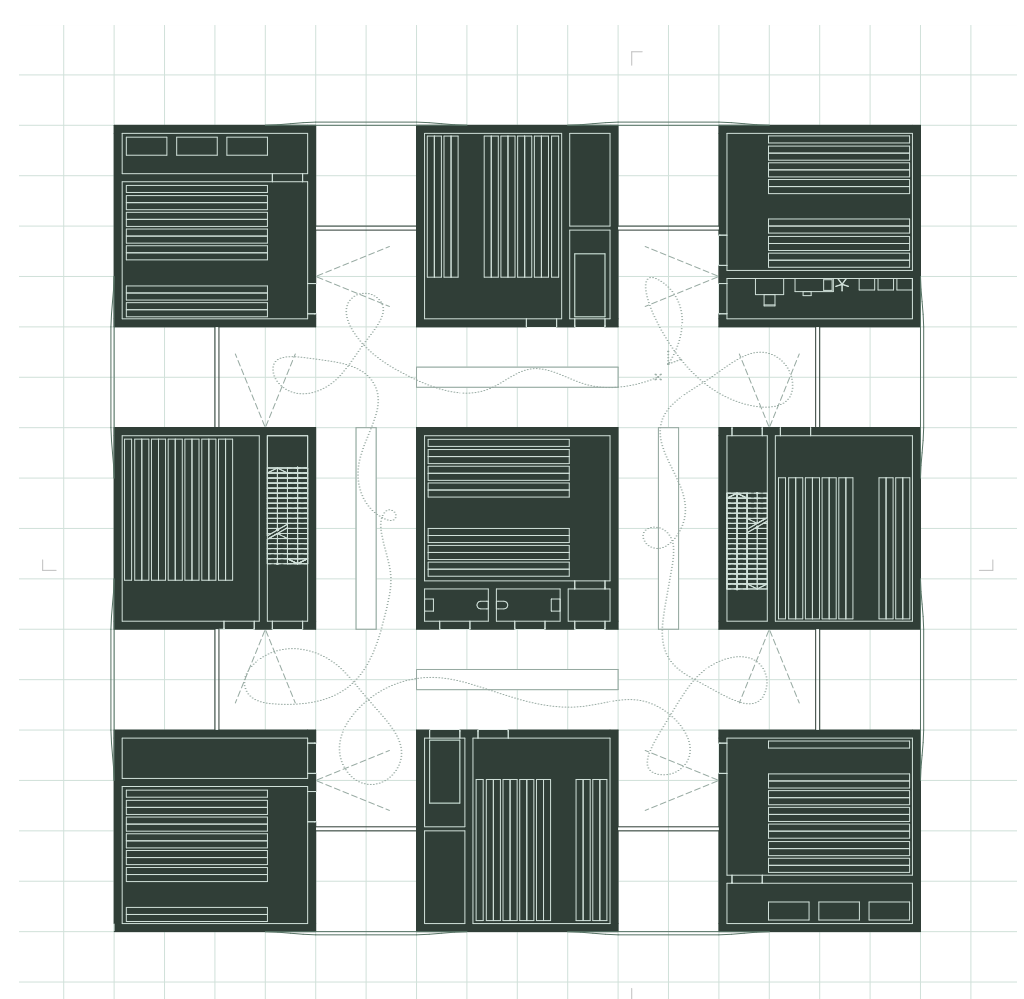
Kupferminen Allihies



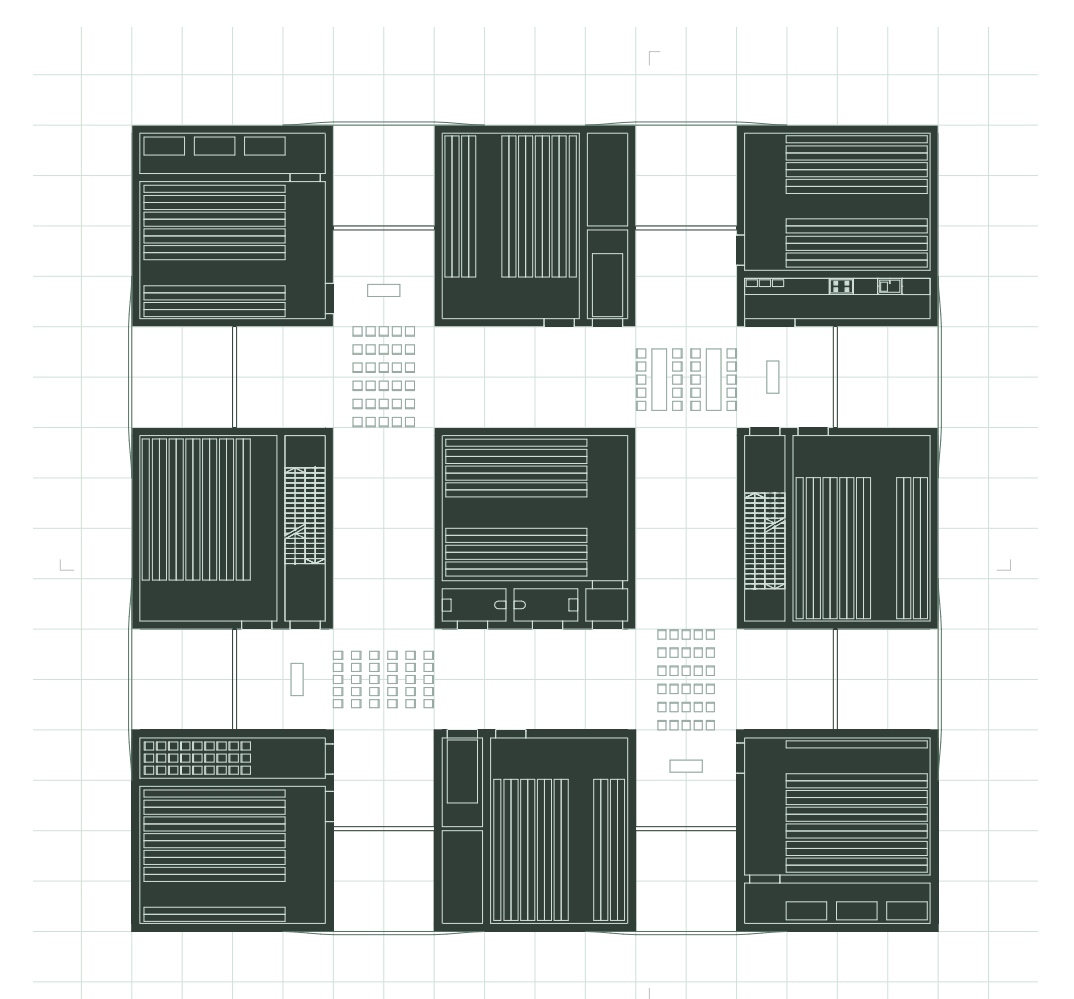
Lageplan M 1:2000



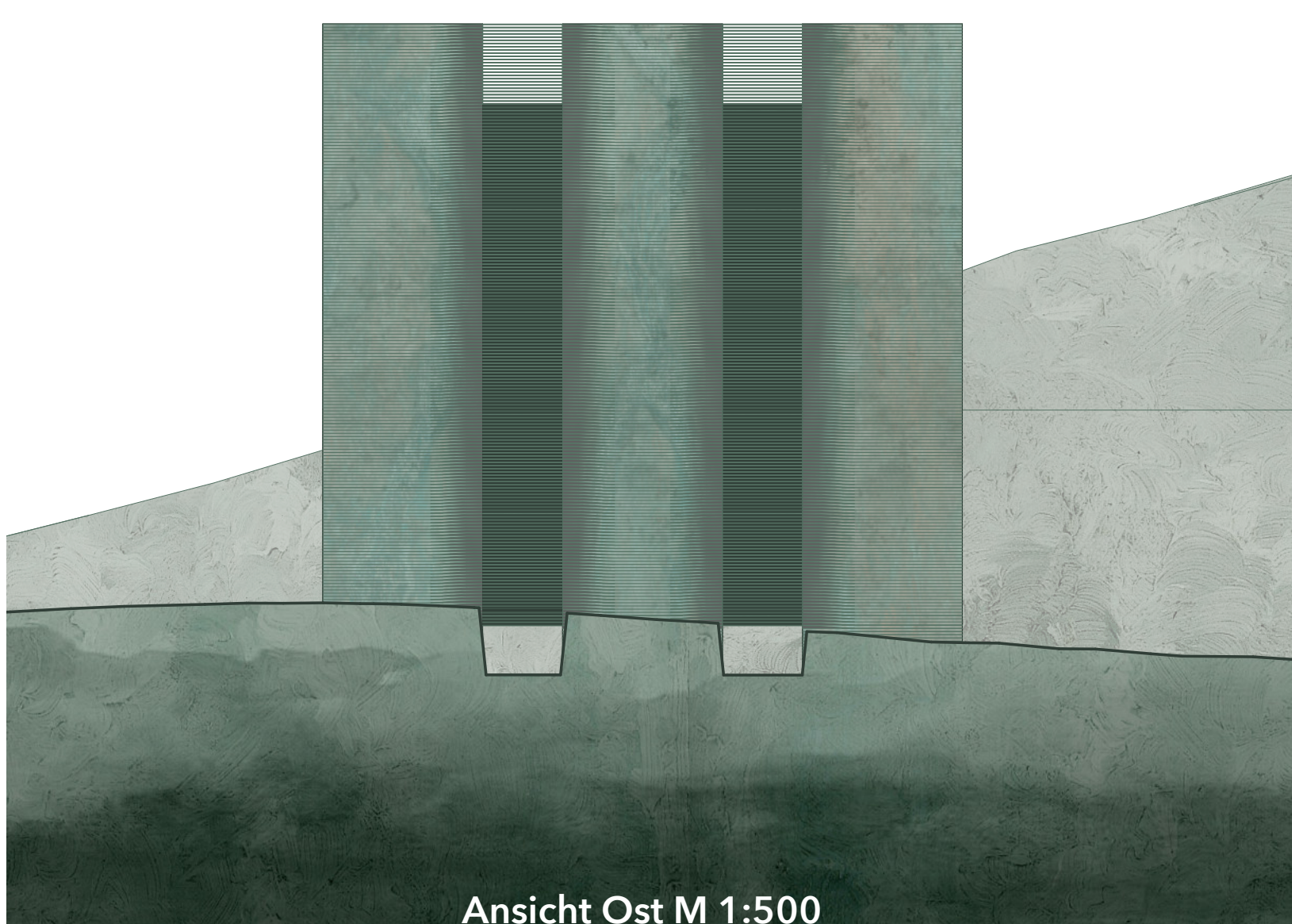
Grundriss 2. OG M 1:500



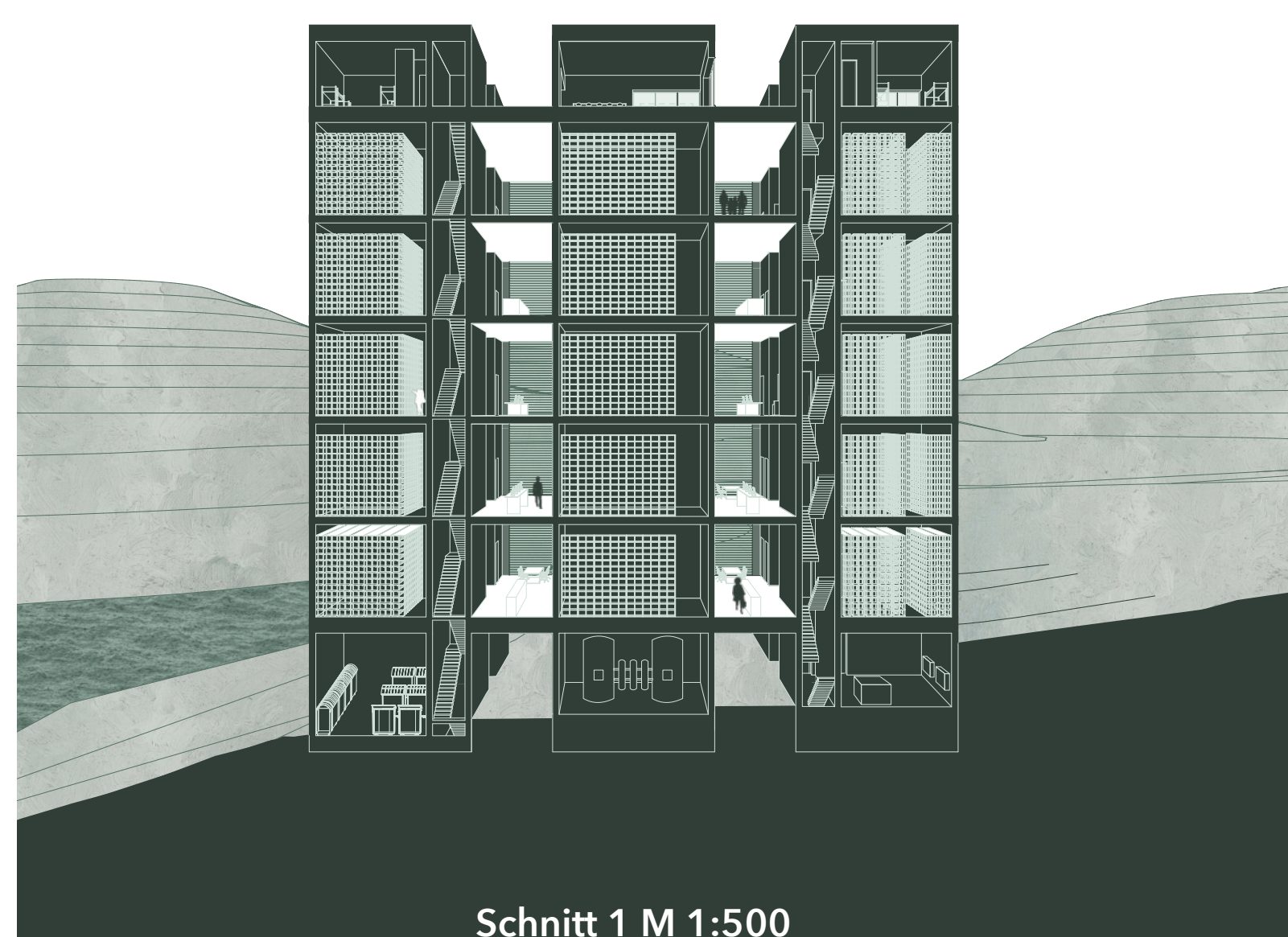
Grundriss 4. OG M 1:500



Grundriss 5. OG M 1:500



Ansicht Ost M 1:500



Schnitt 1 M 1:500



Schnitt 2 M 1:500